



Caledonian

BS 6724 Cables

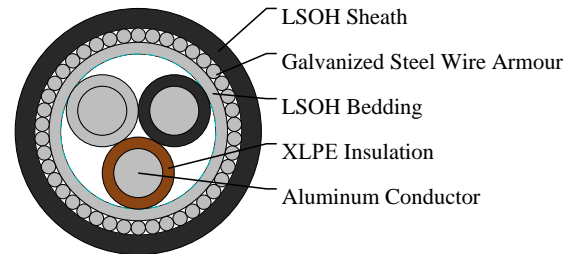
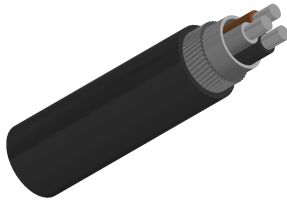
www.caledonian-cables.com

marketing@caledonian-cables.com

BS 6724 Armoured Power Cables, 600/1000V

Three-core 600/1000V cables with solid aluminum conductors

3C16



APPLICATIONS

These cables are used for power and control circuits, they can offer excellent protection through the use of a heavy galvanized steel wire armour. The GSWA makes them suitable for use inside and outside buildings or for direct burial in the ground. For installation where fire, smoke emission and toxic fumes create a potential threat to life and equipment.

STANDARDS

BS 6724

FIRE PERFORMANCE

Flame Retardant	BS EN 60332-1-2 ; BS EN 60332-3-24:2009
Halogen Free	BS EN 60754-1
Smoke Density	BS EN 61034-2

VOLTAGE RATING

600/1000V

CABLE CONSTRUCTION

Conductor: Solid Aluminum conductor, circular, Class 1 to BS EN60228.

Insulation: XLPE (Cross-Linked Polyethylene) Type GP 8 conforming to BS 7655-1.3 or type GP6 conforming to BS 7655-1.2.

Bedding: The bedding shall consist of an extruded layer of polymeric material consistent with the operating temperature of the cable.

Armour: SWA (Galvanized steel Wire Armour)

Outer Sheath: LSOH (Low Smoke Zero Halogen), conforming to BS 7655-6.1.

COLOUR CODE

Insulation Colour: Brown, Black, Grey

PHYSICAL AND THERMAL PROPERTIES



Caledonian

BS 6724 Cables

www.caledonian-cables.com

marketing@caledonian-cables.com

Temperature rating: 0°C to +90°C

Bending radius:

1.5mm² to 16mm²: 6 x overall diameter

25mm² and above: 8 x overall diameter

DIMENSION AND PARAMETERS

No. of Cores × Cross- sectional Area	Nominal Insulation Thickness	Nominal Bedding Thickness	Nominal Sheath Thickness	Nominal Steel Wire Armour Diameter	Approx. Overall Diameter (Extruded Bedding)	Approx. Overall Diameter (Taped Bedding)	Approx. Weight
No. × mm ²	mm	mm	mm	mm	mm	mm	kg/km
3x16	0.7	0.8	1.6	1.25	20.3	20.3	760